

Oriental motor

ORIENTAL MOTOR U.S.A. Corp.
570 Alaska Avenue
Torrance, CA 90503
1-800-GO-VEXTA (468-3982)

Item # RKS564BAD-TS30-3, Microstep Stepper Motor & Driver with Built-in Controller (Stored Data)

Each component can be purchased individually. The package item number has been discontinued. Please contact our technical support team for a replacement.

Web Price —

Request Quote



Specifications | [Driver Specifications](#) | [RS-485 Communication](#)

Specifications —

Return Policy	This product cannot be cancelled or returned once the order has b
Basic Step Angle	0.024°
Frame Size	2.36 in
Motor Length	1.91 in.
Speed-Torque Characteristics	
Holding Torque	848 oz-in
Type	Geared
Shaft/Gear Type	Spur Gear (Offset Shaft)



Gear Ratio (X:1)	30 :1
Backlash	10 arc min (0.17°)
Encoder	Not Equipped
Shaft	Double
Electromagnetic Brake	Not Equipped
Power Supply	Single-Phase 100-120 VAC
Current	4.0 A
Permissible Speed Range (r/min)	0 ~ 150
Rotor Inertia	0.88 oz-in ²
Radial Load	0 in. from Shaft End = 38 lb 0.2 in. from Shaft End = 41 lb 0.39 in. from Shaft End = 45 lb 0.59 in. from Shaft End = 48 lb 0.79 in. from Shaft End = 51 lb
Axial Load	9 lb
RoHS Compliant	Yes
Safety Standards	UL CE
CE Marking	Low Voltage Directives EMC Directives
California Proposition 65	⚠ CA WARNING Cancer risk from exposure to Nickel. See www.P65Warnings.ca.gov Risk of reproductive harm from exposure to Di-n-hexyl phthalate (L Risk of cancer and reproductive harm from exposure to Di(2-ethylf See "?" or copy/paste www.P65Warnings.ca.gov in your browser.
Components	RKSD507-AD [Driver] PKE564BC-TS30 [Motor]
Degree of Protection	[Motor] IP20 [Driver] IP10

■ Dimensions Unit = mm (in.)

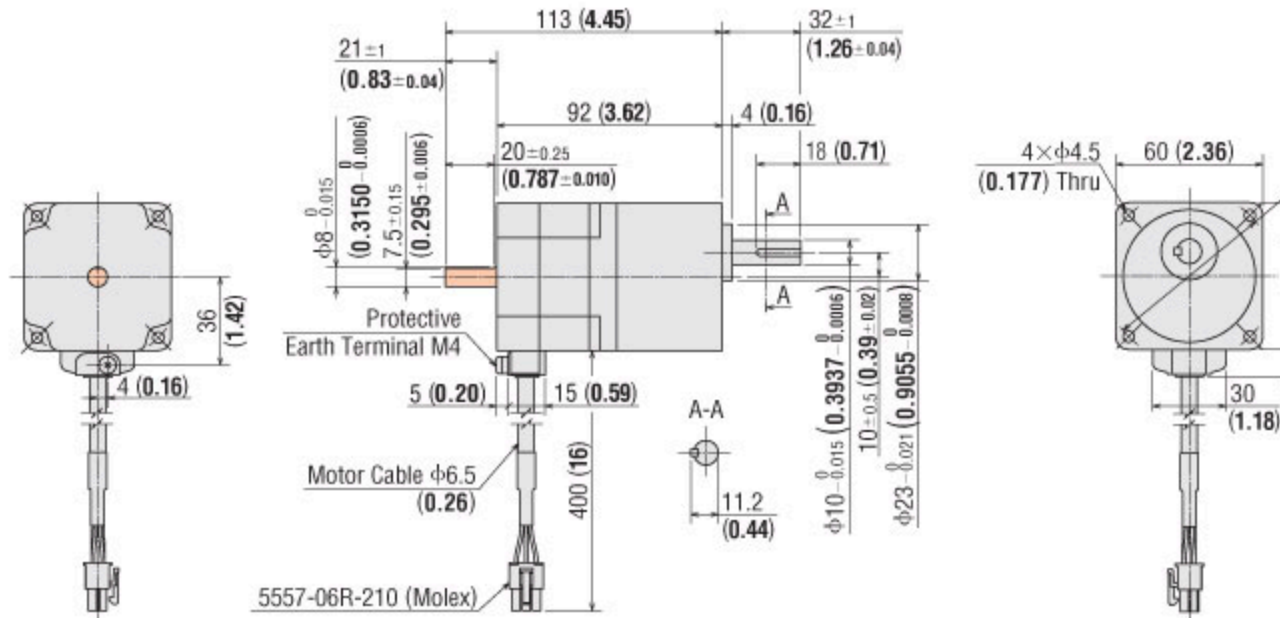
● Motors

◇ TS Geared Type

Frame Size 60 mm (2.36 in.)

Product Name		Motor Product Name	Gear Ratio	Mass kg (lb.)	CAD
Built-in Controller	Pulse Input				
RKS564A	D-TS-3	PKE564AC-TS	3.6, 7.2,	1.1 (2.4)	B1052
RKS564B	D-TS-3	PKE564BC-TS	10, 20, 30		

● Mounting Screw: M4×60 P0.7 (4 screws are included with the product)



■ Dimensions Unit = mm (in.)

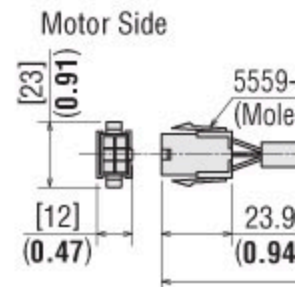
● Cable for Motor (Included)

◇ Only with the Type Supplied with a Connection Cable

Common to All Types

● Cable for Motor

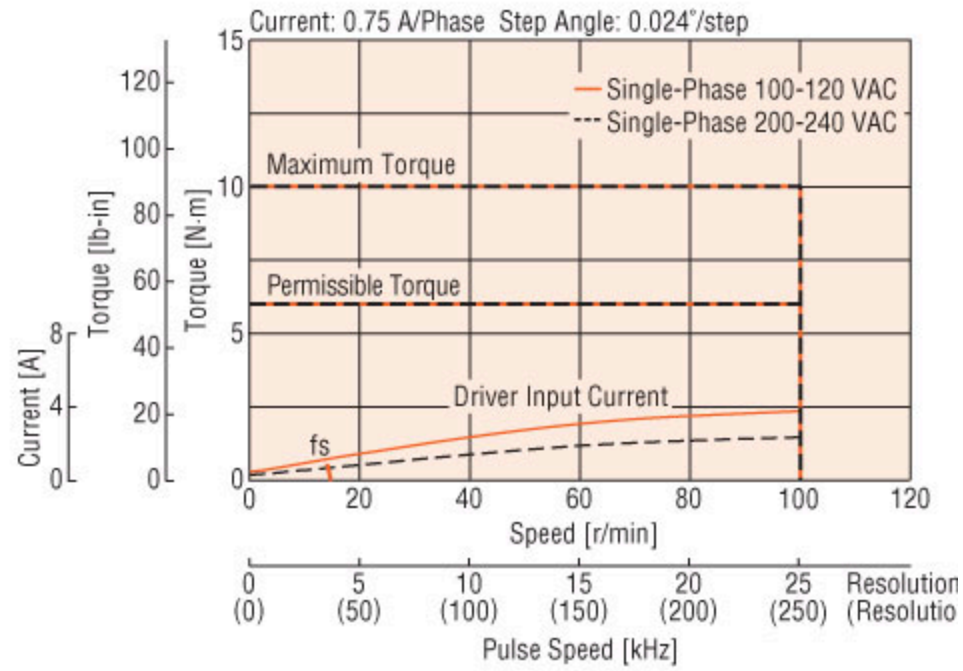
Cable Type	Length L m (ft.)
Cable for Motor	3 (9.8)



Speed – Torque Characteristic

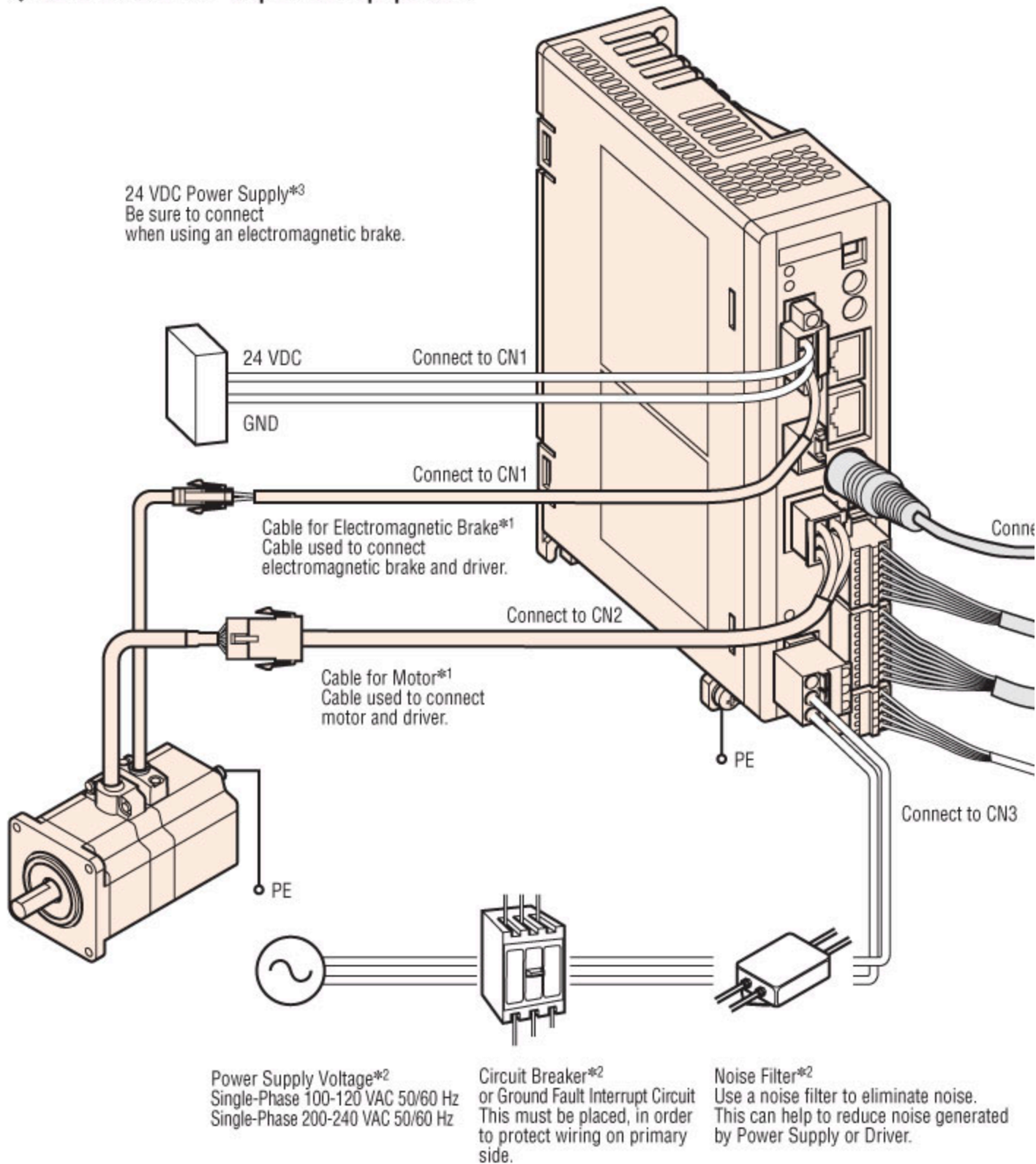
fs: Maximum Starting Frequency

RKS564 Gear Ratio: 30



● Connection Diagram

◇ Connection to Peripheral Equipment



*1 Each product comes with a motor cable 3 m (9.8 ft.) long. Different lengths and flexible cables are available (sold separately).

When wiring the motor and the driver, keep a maximum distance of 20 m (65.6 ft.).

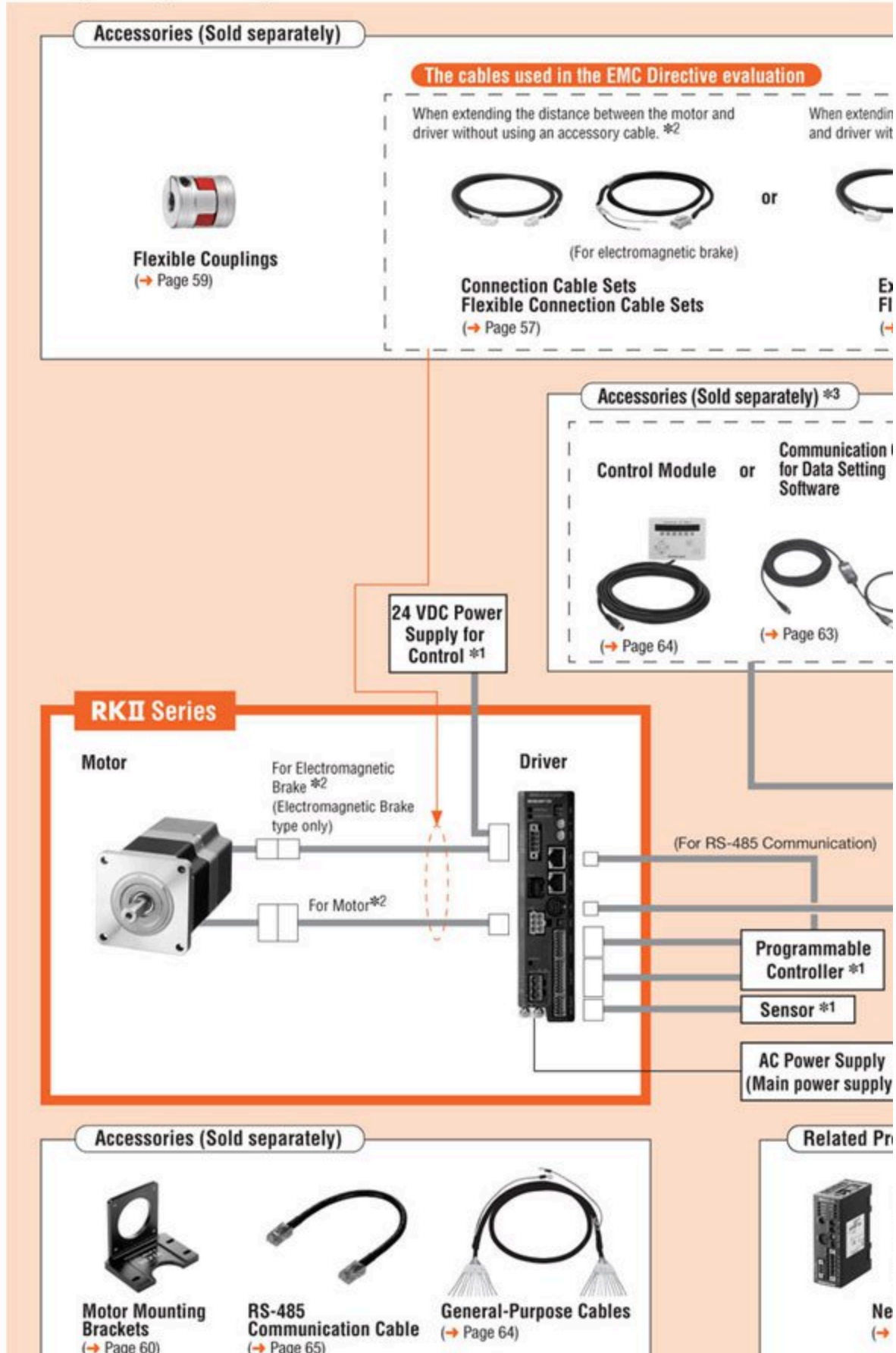
*2 Not Supplied.

*3 Not Supplied. If the wiring distance between the motor and driver is extended to 15 m (49.2 ft.) or longer by using an accessory

System Configuration

Built-in Controller Package Standard Type with Electromagnetic Brake

An example of a system configuration when used with either I/O control or RS-485 communication.



● Refer to the User Manual for operation procedure of this product. For details, please contact the nearest sales office or download from the Oriental Motor website. www.orientalmotor.com

Driver Specifications

Number of Positioning Data Sets	64
Positioning Operation	One-shot operation, Linked operation, Linked operation 2, Sequential mode, Direct mode
Other Operation	Continuous Operation, JOG Operation, Return-to-Home Operation, Test Operation

RS-485 Communication

Protocol	Modbus Protocol (Modbus RTU mode)
Electrical Characteristics	EIA-485 compliance Twisted-pair wire (TIA/EIA-568B CAT5e or greater recommended) is used up to a total extension length of 50 m.
Transmission/Reception Mode	Half-duplex communication
Baud Rate	9600 bps/19200 bps/57600 bps/115200 bps
Physical Layer	Asynchronous mode (data: 8-bit, stop bit: 1-bit/2-bit, parity: none/odd/even)
Connection Type	Up to 31 units can be connected to one programmable controller (master equipment).

