

Orientalmotor

ORIENTAL MOTOR U.S.A. Corp.
570 Alaska Avenue
Torrance, CA 90503
1-800-GO-VEXTA (468-3982)

Item # ARD-C, α STEP AR Series Driver (Single-Phase 200-230 VAC)



α STEP Hybrid Step-Servo

The α STEP ARD pulse input drivers substantially reduces heat generation from the stepper motor through the use of high-efficiency technology. In addition to implementing the closed loop control based on Oriental Motor's original α STEP technology, the α STEP ARD drivers also achieves up to 40% less power consumption, low vibration, improved angle accuracy and is capable of driving large inertia loads. There is no hunting or gain tuning.



Web Price

\$714.00

[Specifications](#) | [Dimensions](#) | [Connection](#) | [System](#)

Specifications

Lead Time¹	Available quantity to ship: 20 pieces by 4/28/26.
Driver Type	Closed Loop, Pulse Input
Power Supply	Single-Phase 200-230 VAC
RoHS Compliant	These products do not contain substances that exceed the regulation values in the RoHS Directive.
Safety Standards	UL CSA EN CE
California Proposition 65	<p>⚠ CA WARNING Cancer risk from exposure to Nickel. See www.P65Warnings.ca.gov</p> <p>Risk of reproductive harm from exposure to Di-n-hexyl phthalate (DnHP). See www.P65Warnings.ca.gov</p> <p>Risk of cancer and reproductive harm from exposure to Di(2-ethylhexyl phthalate (DEHP). See www.P65Warnings.ca.gov</p> <p>See "?" or copy/paste www.P65Warnings.ca.gov in your browser.</p>



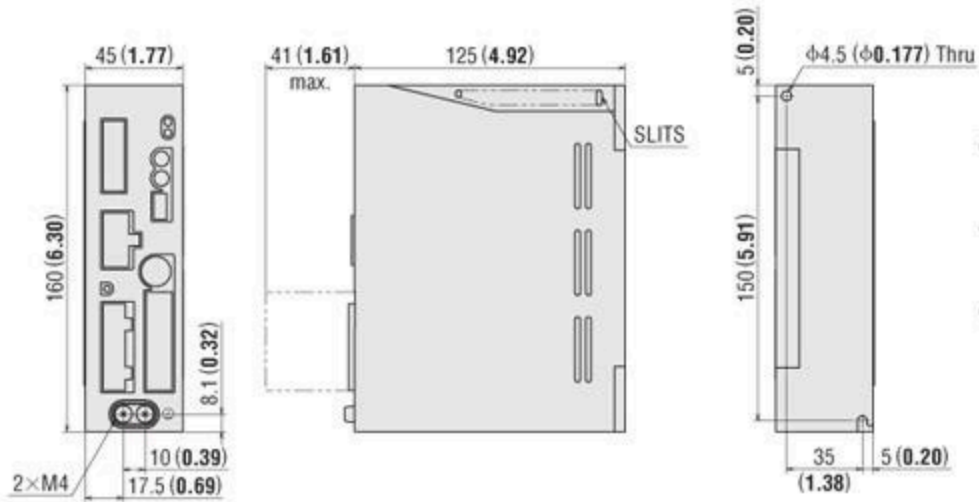
Dimensions

Dimensions Unit = mm (inch)

● Driver

25 Common to All AC Types

Mass: 0.75 kg (1.65 lb.)



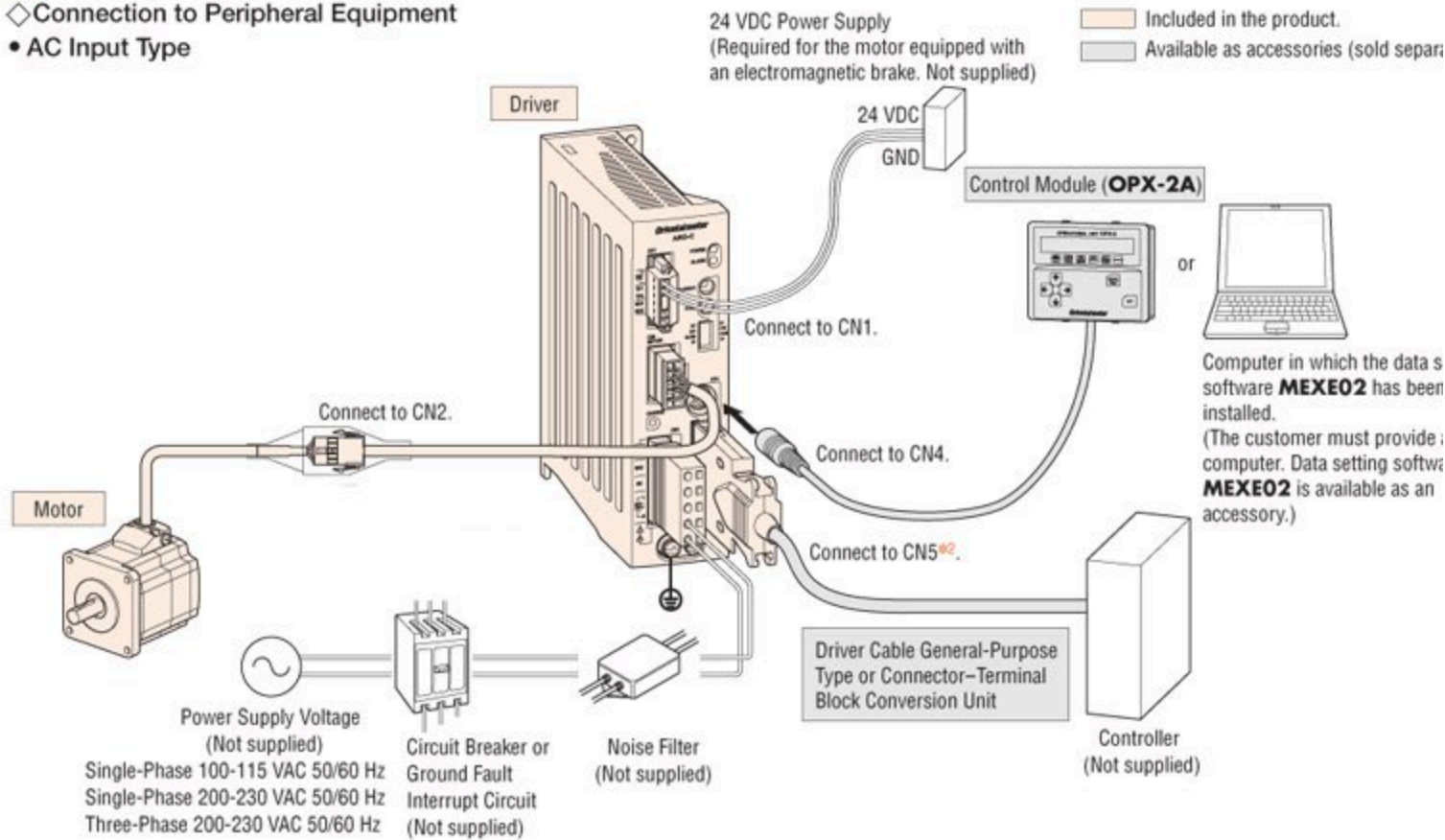
- Control I/O Connector (CN5)
Cover Assembly: 54331-1361 (MOLEX)
Connector: 54306-3619 (MOLEX)
- Connector for Regeneration Unit Input/Main Power Supply Input Terminal (CN3)
Connector: 54928-0570 (MOLEX) or 721-205 (WAGO)
- Connector for 24 VDC Power Supply Input/Regeneration Unit Ther Input/Electromagnetic Brake Output Terminal (CN1)
Connector: MC1.5/6-STF-3.5 (PHOENIX CONTACT)

Connection

● Connection Diagram

◇ Connection to Peripheral Equipment

● AC Input Type



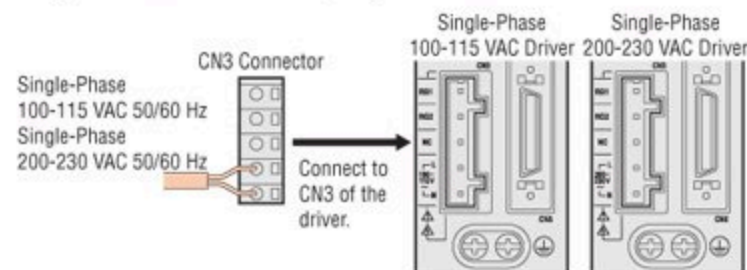
- *1 Each model comes with a motor cable 3 m (9.8 ft.) long. If you need a cable of a different length, or a flexible cable, select an appropriate cable from among the accessories (sold separately).
- *2 Each model comes with a control I/O connector (CN5), but you must select the driver cable general-purpose type or connector-terminal block conversion unit, both of which are provided as accessories (sold separately).

◇ Connecting a Main Power Supply

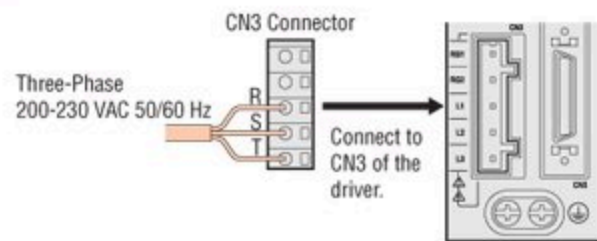
Use the following cable for the power supply line;

Single-phase 100-115 VAC, Single-phase 200-230 VAC: 3-core cable of AWG16 to 14
 Three-phase 200-230 VAC: 4-core cable of AWG16 to 14

• Single-Phase 100-115 VAC, Single-Phase 200-230 VAC

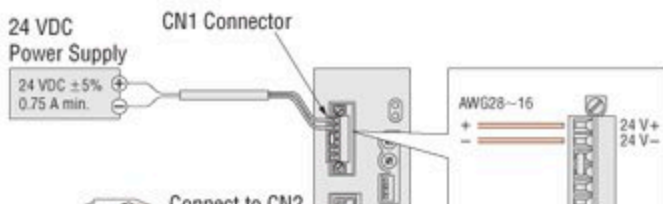


• Three-Phase 200-230 VAC



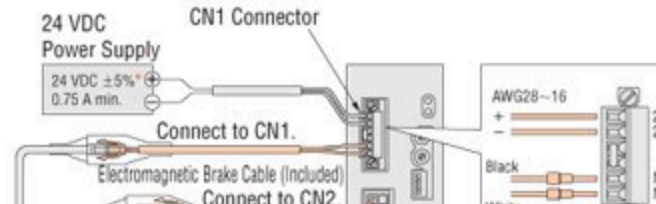
◇ Connecting the Control Power Supply

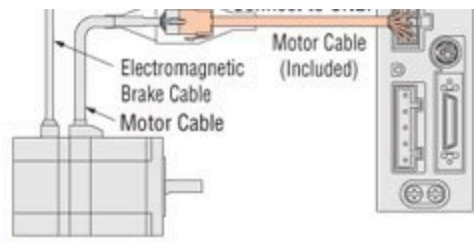
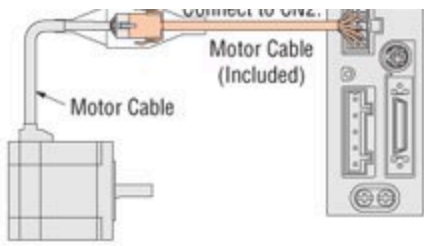
Provide a 24 VDC power supply if you want to supply the control power separately from the main power. Supply of the control power is optional.



◇ Connecting the Electromagnetic Brake

Provide a 24 VDC power supply. Control power for the electromagnetic brake motor is separate from the main power.



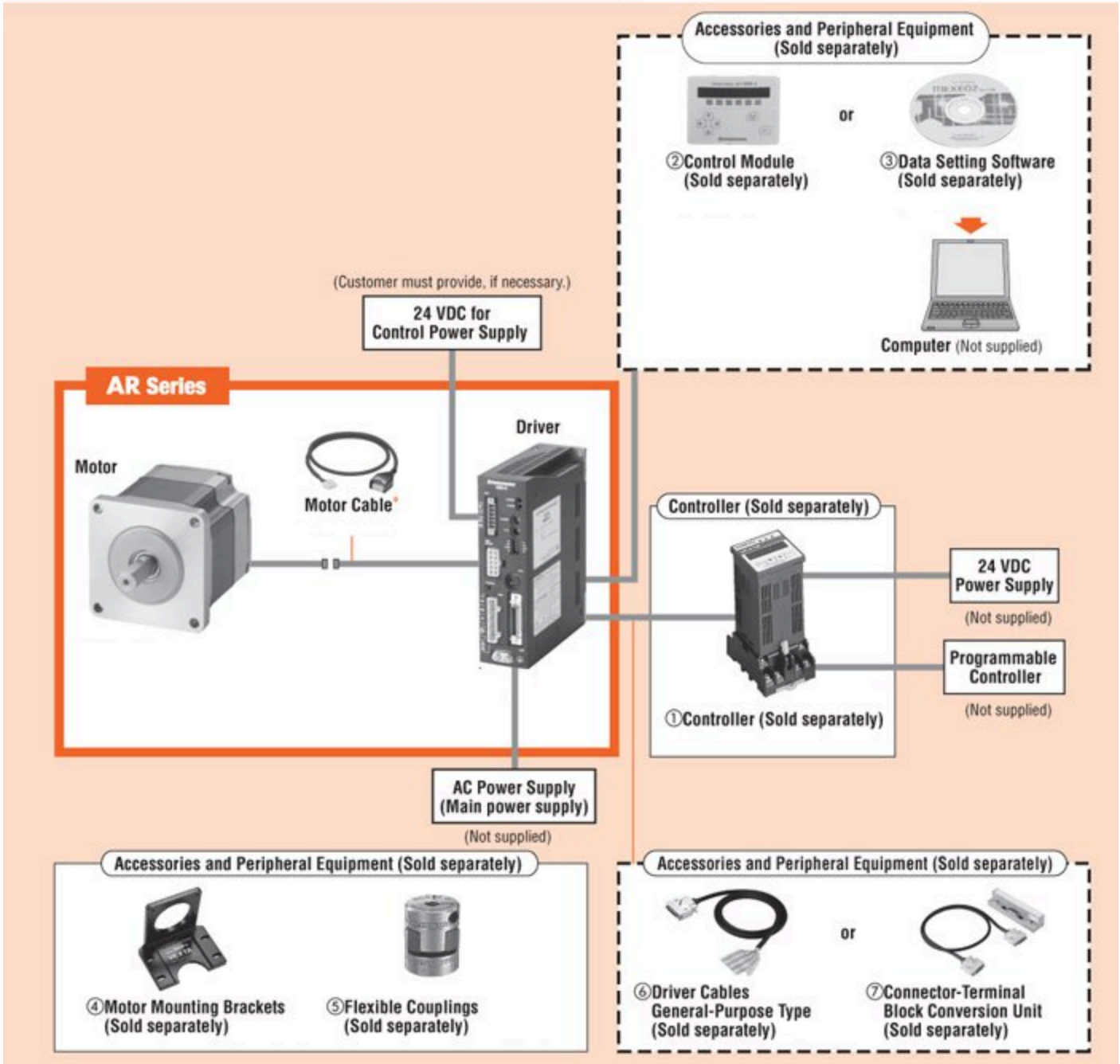


* If the distance between the motor and driver is extended to 20 m (65.6 ft.) or longer, use a power supply of 24 VDC \pm 4%.

System Configuration

Standard Type

An example of a single-axis system configuration with the **SG8030J** controller.



¹ Quoted Ship Date for orders placed before 12:00 pm PST. Quantities may affect Shipping Date.

